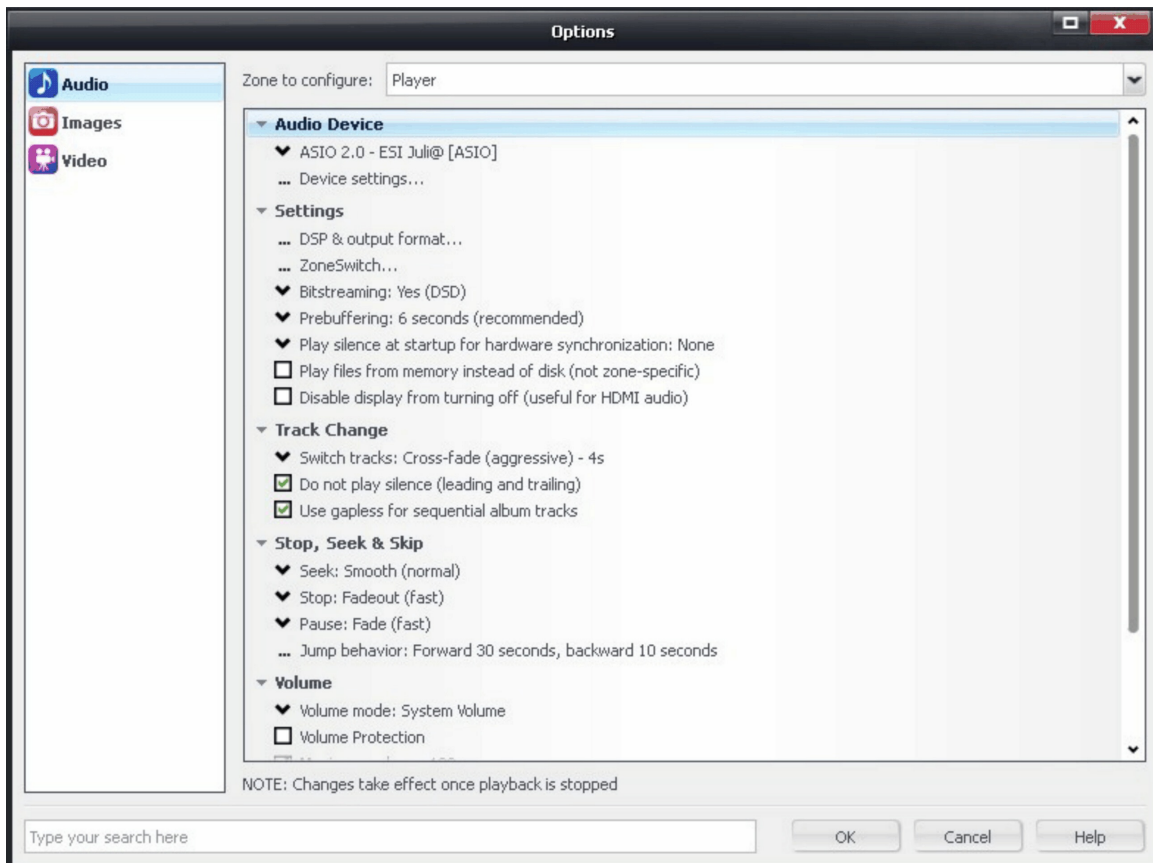


# Audiolense Playback Setup for JRiver Media Center version 21

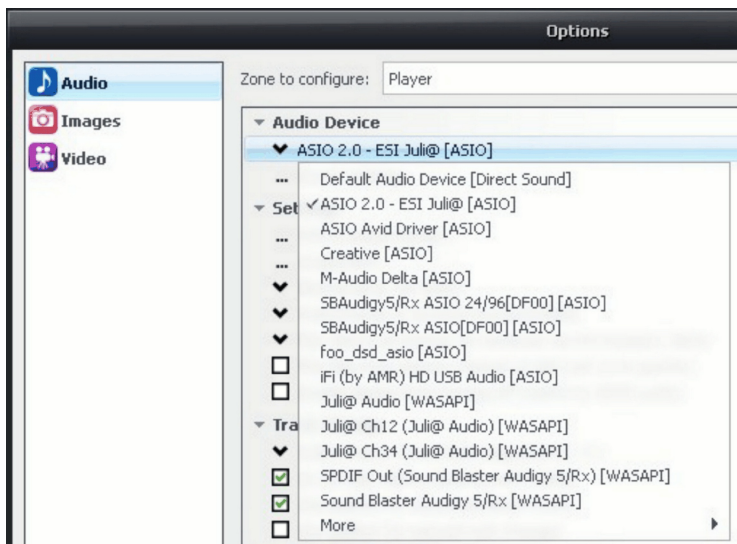
jrmc-21-setup.pdf

Ron Tipton – June 2016

Launch JRMCM and click **Player** in the top Menu bar and then **Playback Options** in the drop-down menu.

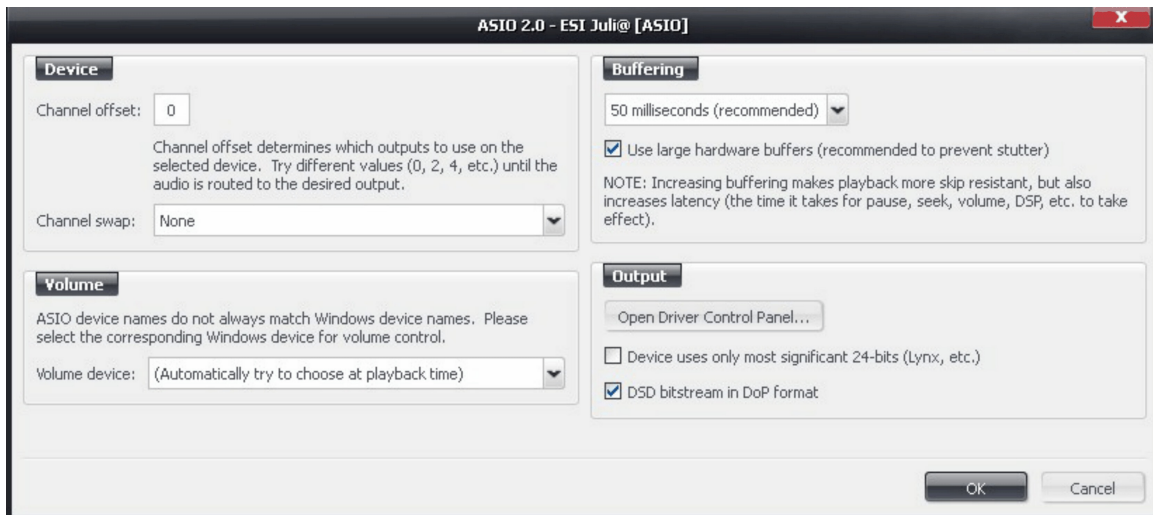


Under **Audio Devices** click **ASIO..**



Select a sound card with an **ASIO** driver, if possible. In this case I chose my default card, the ESI Juli@. Making a selection will **Close** this screen.  
(To change your default card, go to the **Windows Control Panel** and select **Sounds**.)

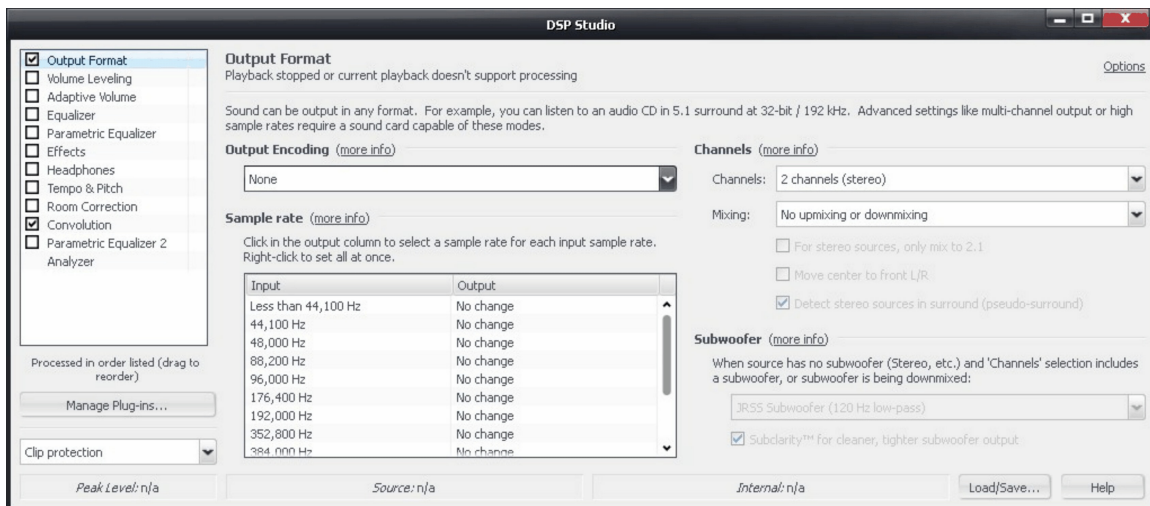
Click **Device settings** under **Audio Devices**



You can probably just accept the **defaults** here. Click **OK** to close.

Now click **DSP and output format** under **Settings**

Click **Output format...**



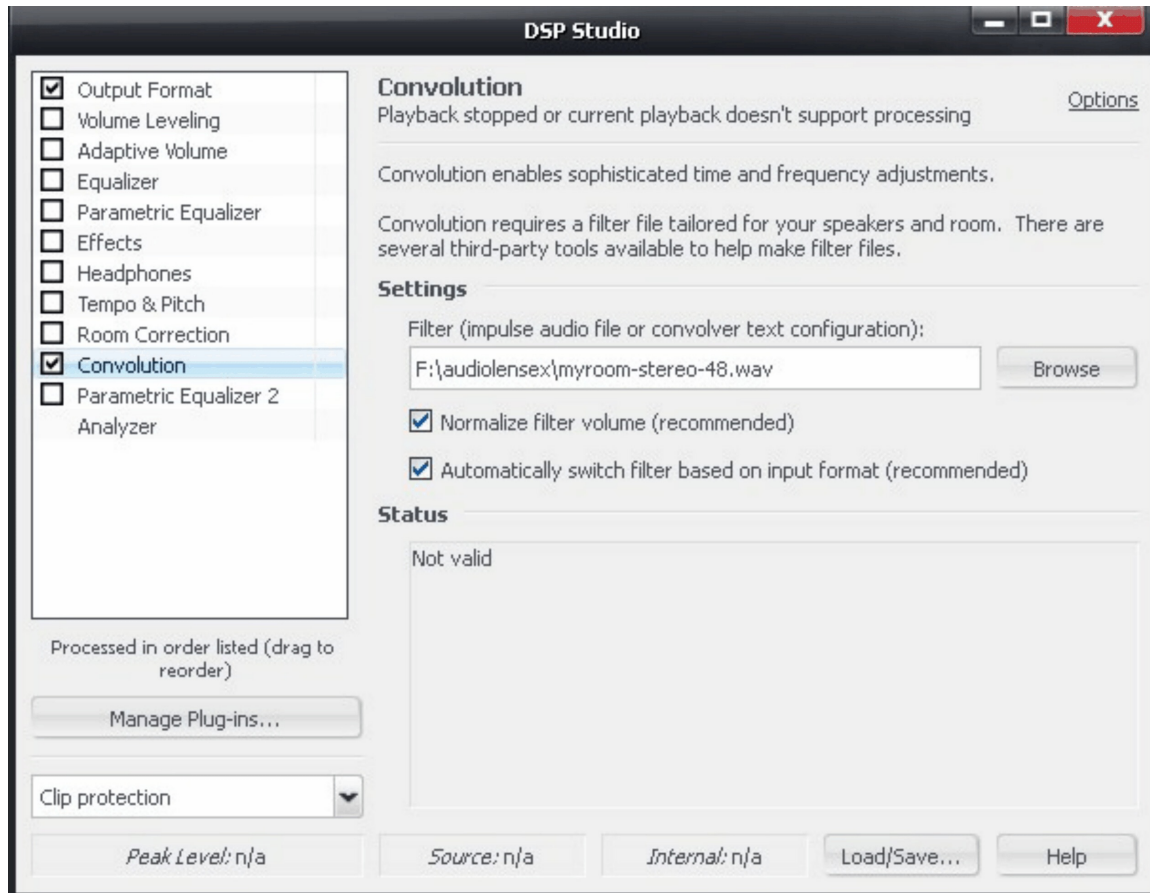
**Output Encoding** – None

**Channels** – 2 channels (stereo)

**Mixing** – No upmixing or downmixing (JRMCA can play a stereo input in a surround format if selected –click more info for details.)

**Sample rate** – leave unselected for playback rate equal to input rate  
**Subwoofer** – Silent

Click **Convolution**



Under **Settings**, browse to find the Audiolense correction filter, the wav file, and put it in the open line.

The Normalize Filter Volume and Automatically Switch Filter boxes will probably be checked (the defaults). But if they aren't, check them.

If you have other JRMC setups, you may want to save this one by clicking the Load/Save button and giving this one a name. If not, just click the upper-right corner X to close the setup

Open a music file or playlist. Playback will be corrected using the Audiolense filter..